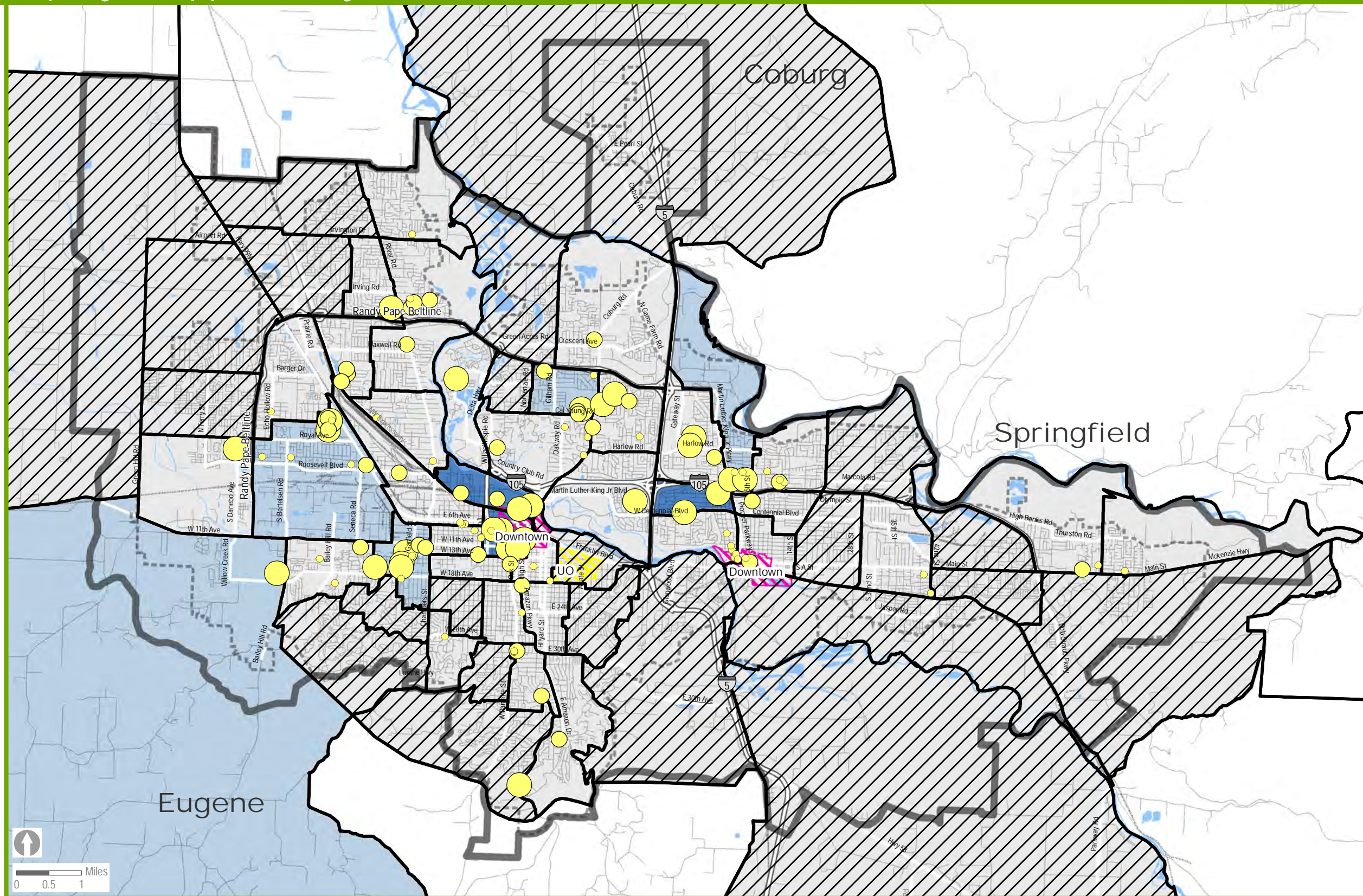


# Equity & Opportunity Assessment Housing Access

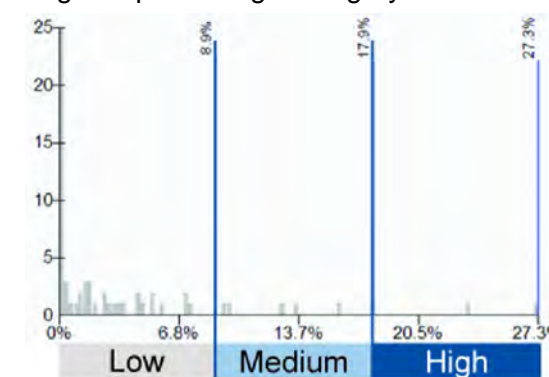
# Subsidized Affordable Rental Housing



This map shows subsidized affordable rental housing units as a percentage of total housing units by tract in the Metropolitan Planning Organization area. About 3.6% (4,040) of all housing units in the Metropolitan Planning Organization area tracts are subsidized affordable rental housing units. There are 23 tracts in the MPO that do not have subsidized affordable rental housing.

For this map the term "affordable" means subsidized rental housing. These are housing developments that have received or do receive funding assistance, or are providing rental units at a lower cost to tenants based on financial need. This map shows only affordable housing units in the Metropolitan Planning Organization area, and not outside the area boundary. Data is aggregated to the tract level so it includes housing units for the entire tract.

The full range of data for each map has been divided into thirds to create low, medium, and high percentage categories. A histogram is also included to show that the data is not necessarily distributed equally across these three categories. About 25% (1,026) of affordable rental housing units are in the top 3 tracts in the highest percentage category.



Map date: 8/30/13 Map data: U.S. Census Bureau, Census 2010, Table H1, Regional GIS. Caution: This map is based on imprecise source data, subject to change, and for general reference only. The work that provided the basis for this map was supported by funding under an award with the U.S. Department of Housing and Urban Development. The substance and findings of the work are dedicated to the public. The author and publisher are solely responsible for the accuracy of the statements and interpretations contained in this publication. Such interpretations do not necessarily reflect the views of the Government.

- Census 2010 Tracts
- Metropolitan Planning Organization Area boundary
- Urban Growth Boundaries

### Percentage of Housing that is Subsidized Affordable Rental Housing

- Low: 0% - 8.9%
- Medium: 9% - 17.9%
- High: 18% - 27.3%

- Tracts with No Affordable Housing

### Affordable Rental Housing by Number of Units

- 1 - 19
- 20 - 49
- 50 - 240

The chart to the right shows the number of tracts in the Metropolitan Planning Organization Area that have low, medium, or high percentages of affordable housing.

